



Alcohol Tester

Henan Hanwei Electronics Co., Ltd.

Promise a Safe, Environmental friendly and Healthy working and living environment

10" resolution	mg/100ml	% (BAC)	% (BAC)	g/L
10	0.05	0.01	0.1	0.1
20	0.10	0.02	0.2	0.2
30	0.15	0.03	0.3	0.3
40	0.20	0.04	0.4	0.4
50	0.25	0.05	0.5	0.5
60	0.30	0.06	0.6	0.6
70	0.35	0.07	0.7	0.7
80	0.40	0.08	0.8	0.8
90	0.45	0.09	0.9	0.9
100	0.50	0.10	1.0	1.0
110	0.55	0.11	1.1	1.1
120	0.60	0.12	1.2	1.2
130	0.65	0.13	1.3	1.3
140	0.70	0.14	1.4	1.4
150	0.75	0.15	1.5	1.5
160	0.80	0.16	1.6	1.6
170	0.85	0.17	1.7	1.7
180	0.90	0.18	1.8	1.8
190	0.95	0.19	1.9	1.9
200	1.00	0.20	2.0	2.0



Henan Hanwei Electronics Co., Ltd.

Add: No. 169 Juesong Road, National High-Tech Zone, Zhengzhou 450001, China

Tel: +86-371-67169080/70

E-mail: sales@hwsensor.com

Web: http://www.hwsensor.com

Fax: +86-371-67169090

hwsensor@gmail.com



Company Profile



Hanwei Sensor Industry Zone



Hanwei Instrument Industry Zone



Hanwei Internet of Things Industry Zone

Henan Hanwei Electronics Co., Ltd. established in 1998, is a professional Hi&New technology corporation focusing on the production, R&D, marketing of various sensors, instrumentations and the Internet of Things application solution. We are honorably to be awarded as "key enterprises of national torch plan", "The top 100 high-growth private enterprises" as well as "The demonstration of enterprise Informationalization System" by the government. In the year of 2009, Hanwei Electronics became the first and the only Listed enterprise in gas detection industry fields on the Growth Board in Shenzhen China (**SZ300007**).

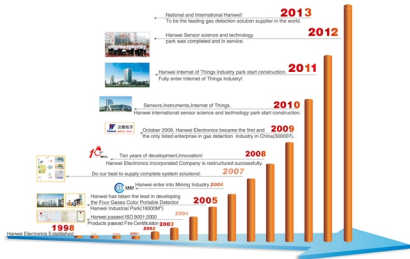
Hanwei has already formed the industrial scale related to all kinds of sensors and instruments like gas, pressure, flow, humidity and pyroelectric etc. With extensive production line and complete industry chain, our products have comprehensively covered many kinds of fields including but not limited to home safety, personnel protections, industrial online process monitors, environment analyzing, mining safety, road safety and industrial project monitoring system. The domestic market share of our sensors is No. 1, as high as 60% which makes HANWEI to be a leading and well-known gas detector manufacturer both in domestic and overseas markets. Now, our products are widely used in more than 100 countries.

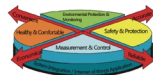
Hanwei is committed to created a safe, environmental friendly and healthy working and living environment for the human beings. By focusing on sensor industry, intelligent instrument industry and Internet of Things industry, Hanwei will build a industry group. From customer demand, project solution, product realization, to installation & adjustment and after-sales service, we are always trying our best to satisfy our customers, and to create value and success for our customers.

Choose Hanwei, choose success!



ISO14001
ISO9001
OHSAS18001



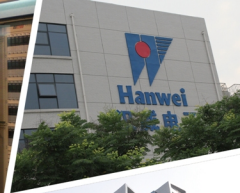


CONTENTS

01Page	--Commercial Alcohol Tester with low cost
02Page	--AT128
03Page	--AT126
04Page	--AT198
05Page	--AT6000
06Page	--AT6100
07Page	--Commercial Alcohol Tester with Fuel cell sensor
08Page	--AT8060
09Page	--AT8020
10Page	--Professional/Evidential Alcohol Tester
11Page	--AT8800
12Page	--AT8900
13Page	--AT8100
14Page	--HWP-02 Printer
15Page	--AT7000
16Page	--Coin Operated Alcohol Tester
17Page	--AT320
18Page	--AT319V
19Page	--AT309
20Page	--AT319



Health • Safety • Environment



AT128 Digital Alcohol Tester

Commercial Alcohol Tester with Low Cost

These series are high sensitive, low price and smart size alcohol testers, especially useful for self alcohol checking. The smart size makes tester be kept in your pocket or handbags easily. Competitive price, fashion and portable design makes everyone can afford it. As a meaningful gift for close person to show your love and care.



Feature

- Advanced hot-wire alcohol sensor
- Quick response
- SMD assembling, stable performance
- MCU control
- Cartoon and LCD Indication, back-up light
- Portable and small design
- No touch healthy design
- Sensor fault self-checking
- Battery saved design, low voltage warning



Technical Information

Sensor : Hot-wire alcohol sensor

Range of measurement: 0.00-1.00mg/L; 0.00-2.00g/L;
0.00-0.20%BAC; 0.00-2.0%BAC;

Alarming Level: 0.50g/L; 0.05%BAC; 0.5%BAC; 0.25mg/L

Accuracy: ± 0.02 BAC% at 0.05BAC%

Power: 2X AAA batteries

Working Environment: Temperature: 0°C - 50°C

Relative Humidity: $\leq 93\%$ RH No dew

Warm-up Time: < 18 sec

Response Time: < 8 sec

Display: 3 digitals LCD with cartoon indication

Dimension: 90X 30 X 16mm

Weight: Less than 45g (without battery)

Certificate: CE & RoHS

Package: Colorful giftbox package

100pcs/carton

Carton size: 33*39*45cm

Weight: 9.00Kgs

AT126 Digital Alcohol Tester with hanging rope



Feature

- Advanced hot-wire alcohol sensor
- Quick response
- SMD assembling, stable performance
- MCU control
- Cartoon and LCD Indication, back-up light
- Portable and small design
- No touch healthy design
- Sensor fault self-checking
- Battery saved design, low voltage warning



Technical Information

Sensor: Hot-wire alcohol sensor
 Range of measurement: 0.00-1.00mg/L; 0.00-2.00g/L;
 0.00-0.20%BAC; 0.00-2.0%BAC;
 Alarming Level: 0.50g/L; 0.05%BAC;
 0.5%BAC; 0.25mg/L
 Accuracy: ± 0.02 BAC% at 0.05BAC%
 Power: 2X AAA batteries
 Working Environment: Temperature: 0°C - 50°C
 Relative Humidity: $\leq 93\%$ RH No dew
 Warm-up Time: ≤ 18 sec
 Response Time: ≤ 8 sec
 Display: 3 digitals LCD with cartoon indication
 Dimension: 103X 37 X 19mm
 Weight: Less than 45g(without battery)
 Certificate: CE & RoHS
 Package: Colorful giftbox package
 100pcs/carton
 Carton size: 33*39*45cm
 Weight/carton: 9.00Kgs

AT198 Digital Alcohol Tester



Feature

- Advanced flat surfaced alcohol sensor
- Energy saving & Environment friendly
- Quick response, excellent accuracy
- Smart MCU control
- Direct testing process LCD Indication
- LCD Indication, word pattern with backup lamp
- Portable design
- No touch healthy design
- Visible and audio warning beyond pre-set limit
- Power saving design, low battery indication



Technical Information

Sensor: Flat-surfaced alcohol sensor
 Range of measurement: 0.00-1.00mg/L; 0.00-2.00g/L;
 0.00-0.20%BAC; 0.00-2.0%BAC;
 Alarming Level: 0.50g/L; 0.05%BAC;
 0.5%BAC; 0.25mg/L
 Accuracy: ± 0.02 BAC% at 0.05BAC%
 Power: 2X AAA batteries
 Working Environment: Temperature: 0°C - 50°C
 Relative Humidity: $\leq 93\%$ RH No dew
 Warm-up Time: 18 counting down
 Response Time: ≤ 8 sec
 Display: 3 digitals LCD
 Dimension: 102X 37 X 20mm
 Weight: ≤ 50 g
 Certificate: CE & RoHS
 Package: Colorful giftbox package, 100pcs/carton
 Carton size: 33*39*45cm
 Weight/carton: 9.00Kgs



AT6000 Alcohol Tester



Feature

- Advanced flat surfaced alcohol sensor
- Energy saving & Environment friendly
- Quick response and resume
- SMD assembling, stable performance
- Smart MCU control
- Direct testing process LCD indication
- Digital LCD display with light blue backup
- Portable and fashion design
- Audio warning beyond pre-set limit
- Sensor Fault Self checking
- Battery saved design, low voltage indication
- Car cigarette lighter optional



Technical Information

Sensor: Flat surfaced alcohol sensor
 Power: DC4.5V (3XAAA) Batteries
 Working Current: $\leq 120\text{mA}$
 Working Environment: Temperature $0^{\circ}\text{C} \sim 50^{\circ}\text{C}$;
 Relative Humidity $\leq 95\%$ No Dews
 Detection Range: $0.00 \sim 1.00\text{mg/L}$; $0.00 \sim 0.20\% \text{BAC}$;
 $0.00 \sim 2.00\text{g/L}$; $0.00 \sim 2.00\% \text{BAC}$
 Alarming Level: 0.25mg/L ($0.05\% \text{BAC}$, 0.50g/L ; $0.50\% \text{BAC}$)
 Accuracy: $\pm 0.02\text{BAC}\%$ at $0.05\text{BAC}\%$
 Response Time: $\leq 5\text{s}$
 Resume Time: $\leq 20\text{s}$
 Display: 3 digits LCD display with light blue backup
 Dimension: $103\text{X}85\text{X}27\text{mm}$ (LXWXH)
 $\leq 84\text{g}$ Battery excluded
 Battery expectancy time: $\geq 200\text{Times}$
 Certificate: CE & RoHS
 Package: Colorful giftbox package, 50pcs/carton
 Carton size: $33^{\circ}39^{\circ}45\text{cm}$
 Weight/carton: 10.00Kgs



AT6100 Alcohol Tester



Feature

- Advanced flat surfaced alcohol sensor
- Energy saving & Environment friendly
- Quick response and resume
- SMD assembling, stable performance
- Smart MCU control
- Direct testing process LCD indication
- Digital LCD display with light blue backup
- Portable and fashion design
- Audio warning beyond pre-set limit
- Sensor Fault Self checking
- Battery saved design, low voltage indication



Technical Information

Sensor: Flat surfaced alcohol sensor
 Power: DC4.5V (3XAAA) Batteries
 Working Current: $\leq 120\text{mA}$
 Working Environment: Temperature $0^{\circ}\text{C} \sim 50^{\circ}\text{C}$;
 Relative Humidity $\leq 95\%$ No Dews
 Detection Range: $0.00 \sim 1.00\text{mg/L}$; $0.00 \sim 0.20\% \text{BAC}$;
 $0.00 \sim 2.00\text{g/L}$; $0.00 \sim 2.00\% \text{BAC}$
 Alarming Level: 0.25mg/L ($0.05\% \text{BAC}$, 0.50g/L ; $0.50\% \text{BAC}$)
 Accuracy: $\pm 0.02\text{BAC}\%$ at $0.05\text{BAC}\%$
 Response Time: $\leq 5\text{s}$
 Resume Time: $\leq 20\text{s}$
 Display: 3 digits LCD display with light blue backup
 Dimension: $100\text{X}70\text{X}28\text{mm}$ (LXWXH)
 $\leq 85\text{g}$ Battery excluded
 Battery expectancy time: $\geq 200\text{Times}$
 Certificate: CE & RoHS
 Package: Colorful giftbox package, 50pcs/carton
 Carton size: $33^{\circ}39^{\circ}45\text{cm}$
 Weight/carton: 10.00Kgs



AT8060 Alcohol Tester

Commercial Alcohol Tester with Fuel Cell Sensor

AT8020 and AT8060 are high-end alcohol tester for personal use which adopt fuel-cell sensor enables police-grade accuracy. The sterilized mouthpiece will make the testing more safe and healthy. As a meaningful gift for close person to show your love and care.



Feature

- Fuel cell sensor, good reliability and accuracy
- Colorful LCD indication
- Passive and Active testing available
- Two-level audible and visible alarm indication
- Low battery automatic power off function
- Low pressure testing rejection function
- Measurement unit and alarming level adjustable function
- Testing record review function
- Password management function
- Adopting anti-return mouthpiece for health and safety



Technical Information

Sensor: Electrochemical (fuel - cell) alcohol sensor
Test Range: 0.000 ~ 2.000mg/L
(0.400%B.A.C; 4.000%B.A.C; 4.000g/l)
Alarming level: 0.250 mg/L (could be modified)
Working environment: temperature: 0°C ~ 50°C
humidity: <95%RH (No Dews)
Power: 2*AA NiMH batteries
Rating capacity: 2.1AH
Dimension LxWxH: 122x67x31mm
Weight: about 120g (excluding battery)
Accuracy: <0.400 ±0.050 mg/L
0.400 ~ 1.000 ±20%
1.000 ~ 2.000 ±30%
(mg/L is alcohol concentration unit from your breath)
Package: In giftbox package
40 pcs packed in one carton
Carton size is 33*39*45cm
Gross weight per carton is 10.00Kgs.
Certificate: CE, RoHS

AT8020 Alcohol Tester



Feature

- Fuel cell sensor, good reliability and accuracy
- Passive and Active testing available
- Low battery automatic power off function
- Measurement unit and alarming level adjustable function
- Testing record review function
- 10pcs records with testing results and time
- Anti-return mouthpiece for health and safety



Technical Information

Sensor type: Fuel - cell alcohol sensor
Test Range: 0.000 ~ 2.000mg/l
(0.400%B.A.C; 4.000%B.A.C; 4.000g/l)
Alarming level: 0.250 mg/L (could be modified)
Working environment: temperature: 0°C ~ 50°C
Humidity: < 95%RH (No Dews)
Power: 3xAAA NiMH batteries
Rating capacity: 2.1AH (Auto power off)
Dimension l×b×h: 110×85×28mm
Weight: ≤ 120g (excluding battery)
Accuracy: < 0.400 ±0.050 mg/L
0.400 ~ 1.000 ±20%
1.000 ~ 2.000 ±30%
(mg/L is alcohol concentration unit from your breath)
Package: In giftbox package
40 pcs packed in one carton
Carton size is 33*39*45cm
Gross weight per carton is 10.00Kgs.
Certificate: CE, RoHS

Professional/Evidential Alcohol Tester

AT8100, AT8800 and AT8900 are professional-used alcohol testers adopting high-accuracy fuel cell sensor. They are widely used by policeman, pharmacy, hospital or testing labs to do evidential alcohol test. Bluetooth technology enables easy and stable connection with printer. Data can be uploading to PC by wire.



AT8800 Professional Alcohol Tester



Feature

- Electrochemical (fuel cell) sensor, good reliability and accuracy
- Colorful LCD indication
- "Mobile phone" keyboard for operation
- Intelligent input methods, more concise
- Real time and temperature indication
- Admirable human-device interface
- Two-level audible and visible alarm indication
- Low battery automatic power off function
- Measurement unit and alarming level adjustable function
- Testing record review function
- 2000 memory records, including testing time, result and type of result
- Connect to PC and upload the result
- Password management function/Adopt anti-return mouthpiece for health and safety

Technical Information

Sensor type: Electrochemical (fuel cell) alcohol sensor
 Test Range: 0.000-2.000mg/l
 (0.400%B.A.C; 4.000%B.A.C; 4.000g/l)
 Alarming level: Pass level: 0.090mg/L (could be modified)
 Fail level: 0.250mg/L (could be modified)
 Work environment: temperature: 0°C-50°C
 humidity: < 95%RH (No Dews)
 Power: 2XAA NiMH batteries
 Rating capacity: 2.1AH
 Dimension (LxWxH): 122x87x31mm
 Weight: about 120g (excluding battery)
 Accuracy: < 0.400 ±0.020 mg/L
 0.400 - 1.000 ±1.5%
 1.000 - 2.000 ±2.0%
 Certificate: CE, RoHS
 Package:
 Standard: Aluminum Alloy suitcase packing for each piece
 5 pcs packed in one carton
 Carton size is 33*39*45cm
 Gross weight per carton is 10.00Kgs



AT8900 Professional Alcohol Tester

Law Enforcement Alcohol Tester with built-in/detachable and stand-alone thermal dot matrix printer.



Feature

- Electrochemical (fuel cell) sensor, good reliability and accuracy
- 2.83 inch OLED screen
- Simplified keyboard with touch panel
- Sensor module changeable
- Intelligent input methods, more concise.
- Real time and temperature indication
- Admirable human-device interface
- Two-level audible and visible alarm indication
- Low battery automatic power off function
- Measurement unit and alarming level adjustable function
- Testing record review function
- 20,000 memory records, including testing time, result and type of result
- Connect to PC and upload the result
- Password management function
- Adopt anti-return mouthpiece for health and safety
- Built-in / detachable and stand-alone Bluetooth printer

Technical Information

Sensor type: Electrochemical (fuel cell) alcohol sensor
 Test Range: 0.000-2.000mg/l
 (0.400%B.A.C; 4.000%B.A.C; 4.000g/l)
 Alarming level: Pass level: 0.090mg/L (could be modified)
 Fail level: 0.250mg/L (could be modified)
 Work environment: temperature: -30°C-50°C
 humidity: < 95%RH (No Dews)
 Power: Rechargeable lithium battery, 7.4V/2500mAh
 Dimension (LxWxH): 156mm*76mm*38mm
 Weight: about 320g (excluding battery)
 Accuracy: < 0.400 ±0.020 mg/L
 0.400 - 1.000 ±1.5%
 1.000 - 2.000 ±2.0%
 Certificate: CE, RoHS
 Package:
 Standard: Aluminum Alloy suitcase packing for each piece,
 6 pcs packed in one carton.
 Carton size is 33*39*45cm,
 Gross weight per carton is 15.00Kgs.



AT7000 Alcohol Tester for Quick scanning test



Feature

- Dolphin shape design
- No touch design, without mouthpiece
- Consecutive tests available
- Quick analysis, one second to show result
- Matrix LED warning method
- Extra flashlight function, more suitable to use at night
- Extra simple traffic sign function
- Active and passive test mode available



Technical Information

Sensor: Fuel cell Alcohol Sensor
Detection range: 0-2.000mg/L
Working Environment:
temperature: 0°C -50°C
humidity: < 95%RH (No Dews)
Warning level: adjustable
Power: 4×AA batteries (500 tests)
Dimension: L X W X H, 284 X 68.5 X 74 mm 400g



Coin/Bill Operated Alcohol Tester

This series product are coin-operated and wall-mount breath alcohol tester which is suitable for public use in bars, restaurants, nightclubs, big companies or anywhere alcohol is consumed. Fuel-cell sensor enables police-grade accuracy and user-friendly operation process ensures users to do their own alcohol tests conveniently. With absolutely no inventory to maintain and its competitive price with reliable performance, it is so easy to make a profitable coin-operated vending business.

AT320 Bill and Coin Operated Alcohol Tester



Feature

- Suitable for bar, or restaurant, hotel, disco etc public places
- Fuel cell sensor, sensor module replaceable
- Operated by disposable straw
- Straw box for 200pcs straws one time
- Other language panel offered
- Audio and Light warning method
- Test result with 4 digits display
- Large lighting block to indicate the operating procedure on the panel
- Coin and Bill operated with video



Technical Information

Sensor: Fuel cell sensor
Test Range: 0.000~2.000mg/l
 (0.400%B.A.C; 4.000‰B.A.C; 4.000g/t.)
Alarming level: Warning level: 0.090mg/L (could be modified)
Danger level: 0.250mg/L (could be modified)
Accuracy: ±0.005 at 0.05BAC%
Working environment: Temperature: 0℃~50℃
 Humidity: <95%RH (No Dews)
Power: AC110-220V 50-60Hz
Calibration: no necessary, well pre-calibrated
 sensor module changeable
Dimension L X B X H: 250mm X 105mm X 40mm
Indication manner: mg/L, mg/100ml, g/L, %BAC, ‰BAC optional
Coin for single time: 0-15
Coin specification: Diameter: 20mm-28mm,
 thickness: 1.2mm-2.5mm
Coins Capacity: about 600 pieces;
Bill width: 62-72mm;
Bill capacity: 600pcs
Straw capacity: 200pcs (≤7mm)
Breath sampling time: about 5 seconds continuous breath
Certificate: CE
Package:
 Standard: Carton packing for each piece. 1pc per carton,
 11Kgs per carton

AT319V Coin Operated Alcohol Tester with Video



Feature

- Suitable for bar or restaurant, hotel, disco etc public places
- Fuel Cell Sensor, Sensor Module replaceable
- Coin operated with Video
- Used by disposable straw
- Straw box for 200pcs straw one time
- Other language panel offered
- Audio and visual alarming method
- Test result with 4 digits display
- Bright LED guide the operation on the panel
- Power by AC adaptor 110/220V
- Setup 1 kind coin with 1-15 pcs
- Press straw dispenser to get 1 straw



Technical Information

Sensor: Fuel cell alcohol sensor, Module replaceable
Test Range: 0.000~2.000mg/l
 (0.400%B.A.C; 4.000‰B.A.C; 4.000g/t.)
Alarming level:
Pass level: 0.090mg/L (could be modified)
Fail level: 0.250mg/L (could be modified)
Accuracy: ±0.005 @ 0.05BAC%
Working environment:
 temperature: 0℃~50℃ humidity: <95%RH (No Dews)
Dimension: DxBxH: (mm) 250X105X40
Indication manner: mg/L, mg/100ml, g/L, %BAC, ‰BAC optional
Coin for single time: 0-15 (For 0, the tester can be tested without coin)
Coin diameter: 20mm-28mm
Coin thickness: 1.2mm-2.5mm
Coins Capacity: about 200 pieces
Straw capacity: 200pcs (≤7mm)
Breath sampling time: about 5 seconds continuous breath.



Feature

- Fuel cell sensor, good reliability and accuracy
- Passive and Active testing available
- Healthy anti-return mouthpieces
- Colorful LCD indication
- Real temperature and time indication
- Two-level audible and visible alarm indication
- Low battery automatic power off function
- Measurement unit and alarming level adjustable
- Simple operation and calibration by user
- Testing records review function
- 2000 memory records including testing time result and type of result
- Password management
- Printer and computer communication optional

Technical Information

Sensor: Fuel cell Alcohol sensor
 Test Range: 0.000 ~ 2.000mg/l
 (0.400%B.A.C; 4.000%B.A.C; 4.000g/l)
 Alarming level: Pass level: 0.090mg/L (could be modified)
 Fail level: 0.250 mg/L (could be modified)
 Work environment: temperature: 0℃ ~ 50℃
 humidity: < 95%RH (No Dews)
 Power: 2*AA NiMH batteries
 Rating capacity: 2.1AH
 Dimension L*W*H: 122*67*31mm
 Weight: about 120g (excluding battery)
 Accuracy: < 0.400 ±0.032 mg/L
 0.400 - 1.000 ±8%
 1.000 - 2.000 ±30%
 Package: Aluminum Alloy suitcase
 5 pcs packed in one carton
 Carton size is 33*39*45cm
 Gross weight per carton is 10.00Kgs.
 Certificate: CE, RoHS



Application

This product specializes in the printing that applied to the alcohol tester.

Feature

- Print Performance:
- Printing principle: Thermal type
- Printing paper width: 58mm
- Valid print width: 40mm- Print Density: 384dots/line
- Dpi: 8dots/mm
- Physical Characteristics:
- Outline Dimension: 108X79X47 mm(LxWxH)
- Weight: 199g
- Paper Roll Diameter: 40mm
- Data transfer method Bluetooth
- Environmental Characteristics:
- Operation Temperature: 0℃~50℃
- Working Humidity: 20%-85%
- Storage Temperature: -20℃~95℃
- Storage Humidity: 5%RH~85%RH



AT8100

AT309 Stand-alone Alcohol Checker



Feature

- Suitable for bar or restaurant, hotel, disco etc
- Fuel Cell Sensor, Sensor Module rechargeable
- Coin operated
- Used by disposable straw
- Straw box for 200pcs straw one time
- Other language panel offered
- Audio and light warning method
- Test result with 4 digits display
- Large lighting block to indicate the operating procedure on the panel
- Power by AC adaptor 110/220V
- Setup 1 kind coin with 1-15 pcs
- Press straw dispenser to get 1 straw



Technical Information

Sensor: Electrochemical (fuel cell) alcohol sensor, Module changeable
 Test Range: 0.000-2.000mg/l
 (0.400%B.A.C; 4.000%gB.A.C; 4.000g/l)
 Alarming level: Pass level: 0.090mg/L (could be modified)
 Fail level: 0.250mg/L (could be modified)
 Accuracy: ± 0.005 @ 0.05BAC%
 Working environment: temperature: 0°C-50°C
 humidity: <95%RH (No Dews)
 Power: AC110/220V Dimension
 DxDxH: (mm) 250X105X400
 Indication manner: mg/l, mg/100ml, g/l, %BAC, %BAC optional
 Coin for single time: 0-15 (For 0, the tester can be tested without coin).
 Coin diameter: 20mm-28mm
 Coin thickness: 1.2mm-2.5mm
 Coins Capacity: about 200 pieces
 Straw capacity: 200pcs ($\varnothing \leq 7\text{mm}$)
 Breath sampling time: about 5 seconds continuous breath.
 Certificate: CE
 Package:
 Standard: Carton packing for each piece, 1pc per carton, 9.00Kgs per carton



Feature

- Suitable for bar or restaurant, hotel, disco etc public places
- Fuel Cell Sensor, Sensor Module replaceable
- Coin operated
- Used by disposable straw
- Straw box for 200pcs straw one time
- Other language panel offered
- Audio and visual alarming method
- Test result with 4 digits display
- Bright LED guide the operation on the panel
- Power by AC adaptor 110/220V
- Setup 1 kind coin with 1-15 pcs
- Press straw dispenser to get 1 straw



Technical Information

Sensor: Fuel cell alcohol sensor, Module replaceable
 Test Range: 0.000-2.000mg/l
 (0.400%B.A.C; 4.000%gB.A.C; 4.000g/l) Alarming level:
 Pass level: 0.090mg/L (could be modified)
 Fail level: 0.250mg/L (could be modified)
 Accuracy: ± 0.005 at 0.05BAC%
 Working environment: temperature: 0°C-50°C
 humidity: <95%RH (No Dews)
 Dimension DxDxH: (mm) 250X105X400
 Indication manner: mg/l, mg/100ml, g/l, %BAC, %BAC optional
 Coin for single time: 0-15
 (For 0, the tester can be tested without coin).
 Coin diameter: 20mm-28mm
 Coin thickness: 1.2mm-2.5mm
 Coins Capacity: about 200 pieces
 Straw capacity: 200pcs ($\varnothing \leq 7\text{mm}$)
 Breath sampling time: about 5 seconds continuous breath.



AT8080 Alcohol Tester



Feature

- Fuel cell sensor-accuracy and reliance
- Dot matrix LCD indication
- Switchable result units(mg/l, g/l, %BAC, ‰BAC)and temperature scale(°C, °F)
- Alarming threshold can be adjusted
- Sensor module design-easy for maintenance
- Pressure sensor-low pressure testing rejection



Technical Information

Testing Range: 0-2mg/l, 0-4g/l,
0-0.4%BAC, 0-4‰BAC

Resolution: 0.001%BAC

Accuracy : $\pm 0.006\%$ BAC at 0.05%BAC

Working Temperature: 10-40°C

Battery : 2*AA alkaline battery



AIR RADIO E1



Feature

- Electrochemical sensor for formaldehyde, alcohol, and carbon monoxide
- Directly plug into smartphone
- APP for smartphone and real time monitoring
- Data uploads and shares with friends
- Mascot appearance

Technical Information

Working Temperature: 10°C--40°C

Dimension: 43mm×52mm×37mm

Weight: 50g

Formaldehyde(HCHO)

Range: 0-2 mg/m³

Accuracy: ±5% Full Scale

Low Alarm: 0.08 mg/m³

High Alarm: 0.30 mg/m³

Sampling: Natural Diffusion

Alcohol(C₂H₅OH)

Range: 0-2mg/l, 0-4g/l, 0-0.4%BAC, 0-4%BAC

Accuracy: ±0.006%BAC at 0.05%BAC

Alarming threshold can be adjusted

Carbon Monoxide(CO)

Range: 0-1000PPM

Resolution: 1PPM

Low Alarm: 35PPM

High Alarm: 100PPM



AT8060

Personal Fuel Cell Breathalyzer



Features

- Fuel cell sensor, reliability and accuracy
- Colorful LCD indication
- Audible and visible alarm indication
- Low battery automatic power off
- Low pressure testing rejection
- Units and alarming concentration level adjustable
- Testing record review
- Password management
- Anti-backflow mouthpiece

Technical parameters

Testing range: 0-2mg/l, 0-0.4%BAC,
0-4%BAC, 0-4g/l
Alarming: preset 0.25mg/l (can be customized)
Working temperature and humidity:
0-50°C, less than 95%RH No Dews
Battery: 2*AA NiMH
Dimension: 122mm*67mm*31mm
Weight: 120g
Accuracy: $\pm 0.05\text{mg/l}$ when reading is between 0-0.400,
 $\pm 20\%$ when 0.400-1.000,
 $\pm 30\%$ when 1.000-2.000
Certificate: CE, RoHS



AT7000

Rapid Screen Breathalyzer



Features

- No need to warm-up, rapid test, result within 1 second
- No need for mouthpieces, clean and hygiene
- Fuel cell sensor
- Dot-Matrix colorful LCD
- Matrix red and green light corresponds to different results
- Flashlight helps in midnight
- Dolphin shape design

Technical parameters

Testing range: 0-2mg/l, 0-0.4%BAC,
0-4%BAC, 0-4g/l
Alarming: can be customized
Working temperature and humidity:
0-50°C, less than 95%RH No Dews
Battery: 4*AAA
Dimension: 284mm*69mm*74mm
Weight: 400g
Certificate: CE, RoHS

