



Promise a Safe, Environmental friendly and Healthy  
working and living environment

# Domestic Gas Alarm

Henan Hanwei Electronics Co., Ltd.



## Henan Hanwei Electronics Co., Ltd.

Add: No. 169 Juesong Road, National High-Tech Zone, Zhengzhou 450001, China  
Tel: +86-371-67169080/70 Fax: +86-371-67169090  
E-mail: sales@hwsensor.com hwsensor@gmail.com  
Web: <http://www.hwsensor.com>



## Company Profile



Hanwei Sensor Industry Zone



Hanwei Instrument Industry Zone



Hanwei Internet of Things Industry Zone

Henan Hanwei Electronics Co., Ltd. established in 1998, is a professional Hi&New technology corporation focusing on the production, R&D, marketing of various sensors, instrumentations and the Internet of Things application solution. We are honorably to be awarded as "key enterprises of national torch plan", "The top 100 high-growth private enterprises" as well as "The demonstration of enterprise Informationalization System" by the government. In the year of 2009, Hanwei Electronics became the first and the only Listed enterprise in gas detection industry fields on the Growth Board in Shenzhen China (**SZ300007**).

Hanwei has already formed the industrial scale related to all kinds of sensors and instruments like gas, pressure, flow, humidity and pyroelectric etc. With extensive production line and complete industry chain, our products have comprehensively covered many kinds of fields including but not limited to home safety, personnel protections, industrial online process monitors, environment analyzing, mining safety, road safety and industrial project monitoring system. The domestic market share of our sensors is No. 1, as high as 60% which makes HANWEI to be a leading and well-known gas detector manufacturer both in domestic and overseas markets. Now, our products are widely used in more than 100 countries.

Hanwei is committed to created a safe, environmental friendly and healthy working and living environment for the human beings. By focusing on sensor industry, intelligent instrument industry and Internet of Things industry, Hanwei will build a industry group. From customer demand, project solution, product realization, to installation & adjustment and after-sales service, we are always trying our best to satisfy our customers, and to create value and success for our customers.

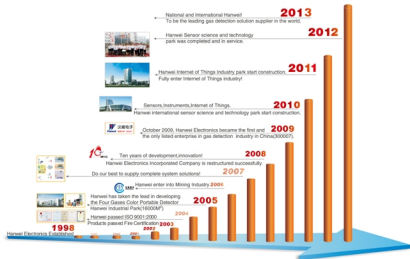
Choose Hanwei, choose success!



ISO14001  
ISO9001  
OHSAS18001



RoHS EN



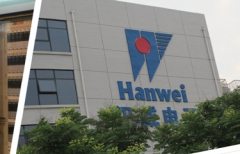


# CONTENTS

01Page	Gas Alarm
02Page	Venus
03Page	KAD (EN50291)
04Page	KAB (EN50194)
05Page	GS
06Page	GT
07Page	GE
08Page	GK
09Page	GD
10Page	GN
11Page	GK901
12Page	KAE
13Page	GX
14Page	VAN300
15Page	QA3000
16Page	DCF80&DCF90



Health • Safety • Environment



## Domestic Gas or CO Alarms

For detecting gas or CO leakage in the house, hotels, buildings etc. By adopting high quality flat surface gas sensor or electrochemical sensor, they can promptly give audible and visual alarming signal once the gas concentration reaches the dangerous level. To double ensure the safety of the human beings, they also have the signal output to connect gas shut off valve or exhaust fans. With sensor module design, the maintenance is quite easy.

# Venus Carbon Monoxide Alarm

Venus Economic CO alarm,  
Battery-operated CO Alarm with LCD display;  
Comply with **EN50291**.

## Feature

- High quality electrochemical Sensor
- Multi-installation type, wall mounted,
- Ceiling mounted or back-support
- MCU control
- LCD display



Ceiling

Wall-hung

Back-support

## Technical Data

Working power:	DC9V (Alkaline battery )
Working time:	>12 months
Detecting gas:	Carbon Monoxide
Working condition:	Tem: -10°C ~55°C
	Hum: ≤95% RH No dew
Working method:	natural diffusion
Alarming method:	visual and audible
Sound level:	90dB
Life:	>5 years



# KAB Combustible Gas Alarm

## Feature

- TUV EN50194 Approval
- High quality catalytic sensor
- Optional relay or valve output



## Specifications

Working voltage: AC220V/110V  $\pm 15\%$   
50Hz-60Hz  
Detecting gas: Natural gas, LPG  
Working condition: Tem: 0°C-55°C  
Hum:  $\leq 95\%$  RH  
Response time:  $\leq 30s$   
Gas sampling: Natural diffusion  
Preset alarm level: 10%LEL



# KAD Carbon Monoxide Alarm

## Feature

- Comply with **BSI EN50291**
- Battery-operated CO Alarm
- High quality electrochemical Sensor
- Multi-installation type
- MCU control
- Peak value memory
- LCD display



## Specifications

Working power: DC3V (2AA battery )  
Working time:  $\geq 12$  months  
Detecting gas: Carbon Monoxide  
Working condition: Tem: -10°C-55°C  
Hum:  $\leq 95\%$  RH No dew  
Working method: natural diffusion  
Alarming method: visual and audible  
Sound level: 85 dB  
Life:  $> 5$  years



# GS Plug-in Gas Alarm

# GT Gas or Carbon Monoxide Alarm

## Feature

- European or UK plug in type
- Sensor module design to change, repair, calibration easily
- Separate socket with two operate mode



## Specifications

Power: AC220V±10% 50Hz  
Detecting Gas: Combustible gas (Natural gas, LPG); CO  
Sensor type: Semiconductor (Combustible gas);  
electrochemical type(CO)  
Alarming level: Combustible gas: 7%LEL;  
CO: Follow EN50291 standard  
Working condition: Tem: 0℃ ~55℃;  
Hum: ≤95%RH  
Audio alarm: ≥70dB  
Output type: Relay AC220V



## Feature

- MCU control reliable and low error
- On-spot audible and visual alarming
- Relay output
- Activating the linkage device
- Obvious visible alarming indication
- Seeing is Believing



## Specifications

Working voltage :AC220V, AC110V,  
DC12V or DC24V  
Detecting Gas: Combustible gas (Natural gas,LPG); CO  
Sensor type: Semiconductor (Combustible gas);  
electrochemical type(CO)  
CO: Follow EN50291 standard  
Working condition Tem: 0℃ ~55℃  
Hum: ≤95%RH  
Alarm method: Audio and video alarm  
Buzzer level: ≥70dB

# GE Plug-in Gas alarm



## Feature

- European or UK plug in type
- High quality flat surfaced sensor
- Sensor module design to change, repair, calibration easily
- Fast response
- High accuracy, low consumption
- MCU control



## Specifications

Working voltage: AC220V/AC110±15% 50Hz
Consumption: <1.5W
Working condition: Tem: 0°C~55°C
Hum: ≤95%RH
Sampling method: natural diffusion
Alarm level: ≥70dB

# GK Gas Alarm



## Feature

- High quality flat surfaced sensor
- Sensor module design to change, repair, calibration easily
- Fast response
- High accuracy, low consumption
- MCU control
- Optional Relay or Valve output



## Specifications

Working voltage: AC220V, AC110V, DC24V, DC12V
Working condition: Tem: 0°C~55°C
Hum: ≤95%RH
Response time: ≤30s resume automatically
Sampling method: natural diffusion
Alarming Method: visual and audible
Alarm sound: ≥70dB



# GD Gas Alarm

# GN Gas leakage alarm for fire and security system



## Feature

- High quality flat surfaced sensor
- Sensor module design, easy to change, repair and calibrate.
- Fast response
- High accuracy, low consumption
- MCU control
- Optional Relay or Valve output



## Specifications

Working voltage: AC220V AC110V, DC24V DC12V
Working condition: Tem: 0°C-55°C Hum: ≤95%RH
Response time: ≤30s resume automatically
Sampling method: natural diffusion
Alarming Method: visual and audible
Alarm sound: ≥70dB

## Feature

- Easy to connect with fire system or security system
- High quality flat surfaced sensor
- Sensor module design to change, repair, calibration easily
- Fast response
- High accuracy, low consumption
- MCU control



## Specifications

Working voltage: DC24V or DC12V
Target gas: LPG, natural gas,
Consumption: <1.5W
Working condition: Tem: 0°C-55°C Hum: <95%RH
Preset alarm point: 7%LEL
Alarm method: Visual and audible
Alarm sound: ≥70dB
Sensor life: >5 years



# GK901 CO&CH4 Alarm



## Feature

- Dual gas sensor module design
- Available for natural gas & CO
- Electrochemical sensor for CO
- Auto reset
- Malfunction self check indicator
- Optional relay and valve output
- Easy connection
- Obvious visible alarming indication



## Specifications

Working voltage: AC220V±15% 50Hz
Working condition: Tem: 0-55 °C
Hum: ≤95% RH
Working method: natural diffusion
Alarm method: visual and audible
Sound level: ≥70dB

# KAE CO&CH4 Alarm

## Feature

- LCD display
- Dual gas sensor module design
- Available for natural gas & CO
- Electrochemical sensor for CO
- Auto reset
- Malfunction self check indicator
- Optional relay and valve output



## Specifications

Working voltage: AC220V±15% 50Hz
Working condition: Tem: 0-55 °C
Hum: ≤95% RH
Working method: natural diffusion
Alarm method: visual and audible
Sound level: ≥70dB



# GX Economic Gas Alarm

# VAN300 Gas Alarm System



## Feature

- High quality flat surfaced sensor
- Sensor module design, easy to change, repair and calibrate.
- Fast response
- High accuracy, low consumption
- MCU control
- Optional Relay or Valve output



## Specifications

Working voltage: AC220V, AC110V,  
DC24V, DC12V  
Working condition: Temp: 0℃~55℃  
Hum: ≤95%RH  
Response time: ≤30s resume automatically  
Sampling method: natural diffusion  
Alarming Method: visual and audible  
Alarm sound: ≥70dB

VAN300 Profitable alarm system specially designed for caravan mobile home and boat use



VAN300 Gas alarm system, consisting of VAN300 panel and 1-3pcs detectors is designed especially for detecting Leakage of CO, combustible gas and aether in Caravan, Mobile home, Boat etc. It adopts high-quality air-sensitive component and advanced sensor technology. When the gas concentration reaches the preset alarm Level, it gives visual and audible signals, which reminds the user of taking prompt favorable action.



QA3000 suitable for gas leakage detecting , widely used in gas powered taxi and bus to avoid fire emergency or explosion due to gas leakage.



## Feature

- Excellent performance
- Lower consumption
- Easy operation and maintenance



## Technical Data

DCF-80 Gas Shut Off Valve  
 Working voltage:DC 6V  
 Working current:< 700mA  
 Working method: pulse voltage for close,manual reset  
 Working pressure:0.5Kpa-5Kpa  
 Size:1/2" , 3/4" , 1"

DCF-90 Gas Shut Off Valve  
 Technical data:  
 Working voltage:DC 6V -12V  
 Working current:< 0.1A-0.5A  
 Working method: pulse voltage for close,manual reset  
 Working pressure: ≤30Kpa  
 Size:1/2" , 3/4" , 1"



## Specifications

Gas sensor: Semiconductor  
 Detecting gas: Natural gas  
 Working voltage:DC12V+/-1V  
 Working condition: Tem: -40℃~70℃  
 Hum: ≤95%RH  
 Pressure limit:86kPa~106 kPa  
 Response time:≤30s, resume automatically  
 Detection range:0~100%LEL  
 Alarm method: Audio and visual alarming  
 Audio alarm sound:≥70dB  
 Sensor life:5 years



DCF-80



DCF-90